

# Table Saw Project Center

## Materials & Hardware

### ASSEMBLY TABLE WING & STORAGE

A	Extension Table Top (1)	27 x 30 - 2¼ Ply.
B	End Panel (1)	23¾ x 31½ - ¾ Ply.
C	End Legs (2)	2 x 31½ - ¾ Ply.
D	End Panel Shelves (2)	7 x 23¾ - ¾ Ply.
E	Cleats (2)	1¼ x 23¾ - ¾ Ply.
F	Cabinet Sides (2)	19¾ x 23¾ - ¾ Ply.
G	Cabinet Shelves (3)	14½ x 23¾ - ¾ Ply.
H	Cabinet Back (1)	5¾ x 14 - ¾ Ply.
I	Drawer Sides (2)	4½ x 22 - ¾ Ply.
J	Drawer Front/Back (2)	4½ x 12 - ¾ Ply.
K	Drawer Bottom (1)	12 x 21 - ¼ Ply.
L	Drawer False Front (1)	5½ x 13¾ - ¾ Ply.

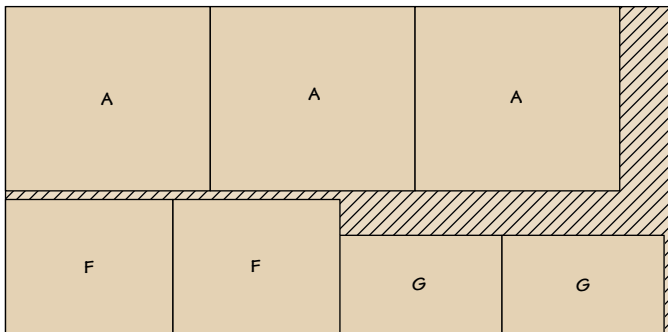
- (6) #8 x 1½" Fh Woodscrews
- (10) #8 x 1¼" Fh Woodscrews
- (24) #10 x 1½" Fh Woodscrews
- (12) #8 x 1¼" Fine Ph Screws
- (16) #8 x ¾" Ph Screws
- (2) Clamp Track (33¾" long)
- (1 set) Clamp Blocks
- (2) 3" Locking Bench Clamps
- (1) Router Plate
- (4) Router Plate Levelers
- (2) Universal Fence Clamps
- (1) Dust Port
- (2) Heavy-Duty Leg Levelers
- (1 pr.) 22" Over-Travel Drawer Slide
- (1) 1½" x 5¾" Drawer Pull w/Screws
- (26) ½"-18 x 2" Hex-Head Bolts
- (26) ½"-18 Hex Nuts
- (26) ½" Washers

### ROUTER TABLE WING & FENCE

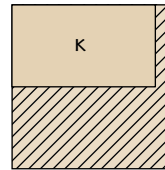
M	Router Table Top (1)	14 x 27 - 1½ Ply.
N	Narrow Support Strips (2)	1½ x 27 - ¾ Ply.
O	Wide Support Strips (2)	11¾ x 5½ - ¾ Ply.
P	Fence Back/Frt./Btm. (3)	2½ x 24 - ¾ Ply.
Q	Fence Tops (2)	2½ x 10¼ - ¾ Ply.
R	Fence Filler Blocks (4)	1 x 2½ - ¾ Ply.
S	Fence Face (1)	3¼ x 27 - ¾ MDF

## Cutting Diagram

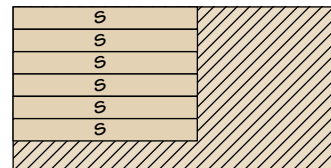
48" x 96" - ¾" PLYWOOD



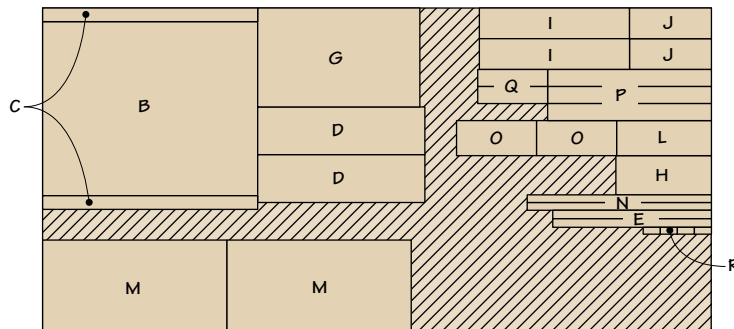
24" x 24" - ¼" PLYWOOD



24" x 48" - ¾" MDF



48" x 96" - ¾" PLYWOOD



**NOTE:** MAKE EXTRA FACES TO KEEP ON HAND